

Chapter III

RESEARCH METHODOLOGY

3.1 Research Method

A qualitative method is used by the writer for this research. The qualitative method provides the ways of discerning, examining, comparing and interpreting data. Moleong (2007:3) said that qualitative research is a research procedure that produces descriptive data in the form of written or verbal words from people and from the observed behavior. The writer also uses the descriptive method. The purpose of a descriptive method is to look over a phenomenon that is occurring at a specific time and places and to describe a specific behavior that occurs in the environment.

Stated by Sugiyono (2005:21), the descriptive method is a method used to describe or analyze the results of the study but not used to make broader conclusions. In order to support this research, the writer also uses library research. Besides that, the writer also uses the internet as a supporting media to get some information related to this research.

3.2 Procedures of Data Collection

The writer reads some books from libraries and journals from the internet to acquire more information and important things to support the completion of this research. The writer uses five stages in collecting the data as follows:

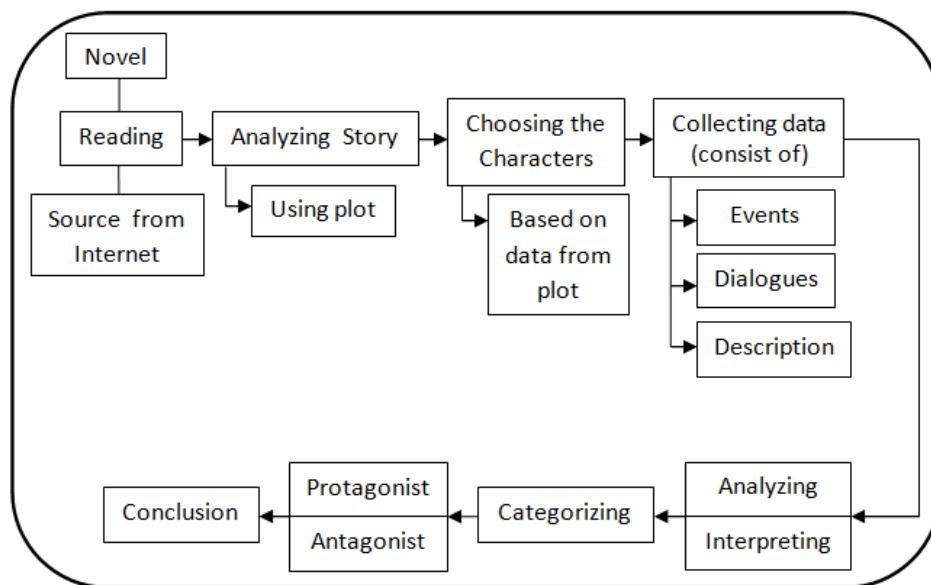
1. Reading *Alice's Adventure in Wonderland* novel using a close reading method and classify it using Freytag's Pyramid to understand how does the plot in the story
2. Highlighting the characters based on the data from the plot to know who is the main character, how many characters that exist and how important their role is.
3. Selecting the characters that will be analyzed based on their important role from the plot of the story.
4. Collecting the description of characterizations of the selected characters from the dialogues, events and the descriptions.
5. Interpreting and analyzing the data using the character and characterizations theory that the writer explained in chapter two.

3.3 The Technique of Analyzing the Data

In analyzing the data, the writer takes the data directly from the novel and take several steps. The first step is, the writer will analyze the plot of the story to help the writer to understand the story and figure out which are the characters that the writer will be analyzed. In analyzing the plot the writer uses Freitag's Pyramid. From the Freitag's Pyramid, the conflicts will be visible and the characters that exist in the story will be revealed. There are twenty one characters in the novel of *Alice's Adventures in Wonderland* but the writer only chose seven out of twenty one because in this novel, it is only consist of 12 chapters and most of the characters that appears in the story does not have much role in the story. They just

appeared as the supporting characters. The Freitag's Pyramid also helps the writer to get the data that are needed to identify which characters that is important and how they give impact to the story. Therefore, the writer chooses seven characters that has a big role in the story.

The data that have been obtained then will be analyzed and focused on finding the characterizations of the seven selected characters using character and characterization theory by Minderop which already explained in chapter two. After finding the characterizations, the writer will categorize it into protagonist character and antagonist character. After the data has been analyzed and categorized, the last step is to make the conclusion of this study.



Data Analysis flow chart
Table 3.1 Data Analysis